

GLHE crane

Designed for handling heavy lift and multipurpose cargoes

Crane type

GLHE electric variable frequency drive (VFD) cranes are self-contained units with all machinery enclosed in the crane housing. This protects them from weather, corrosion and damage. The standard GLHE range covers lifting capacities from 100 to 500 tonnes, with outreaches of up to 36m.

The crane can also be delivered in a stepless load/outreach combination, which makes maximum use of the crane due to its mechanical design.

Each crane is tested electrically, hydraulically and mechanically before delivery.

General design

GLHE cranes are designed to meet the rules of all recognised classification societies.

The MacGregor control system ensures smooth, fast and stepless crane control, with hoisting, luffing and slewing motions independent of each other.



HOISTING CAPACITY:

Main hoist: 100-500t

Auxiliary hoist: 35-60t

JIB RADIUS:

20-36m

This means that at their maximum capacity, GLHE cranes can operate at full speed using all three movements at the same time. Cranes can also be supplied with the tools needed for handling specific types of cargo.



Important crane criteria

- Excellent positioning performance
- Long outreach to an optimum of weight and cost
- Robust design
- All machinery is weather protected inside crane housing
- Level-luffing

Safety

- Diagnostic check at start-up procedure
- Overload protection with load cell as standard
- Crane performance will automatically adjust when operating in extremely high temperatures to avoid down time

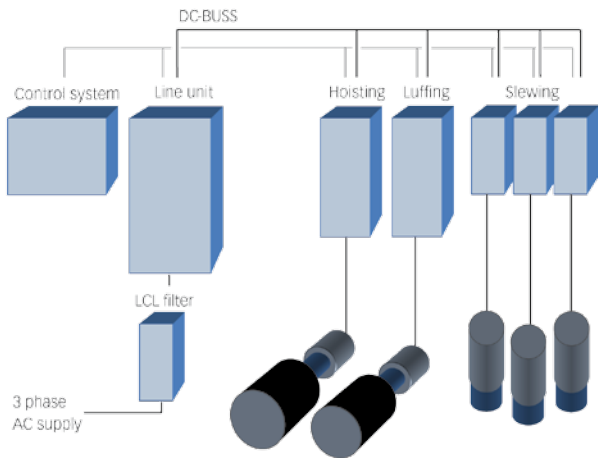
Crane Control System

- In-house system development
- Individual adjustment possibilities
- Integrated diagnostic functions
- Optional features available



MACGREGOR

Designed to perform with the sea



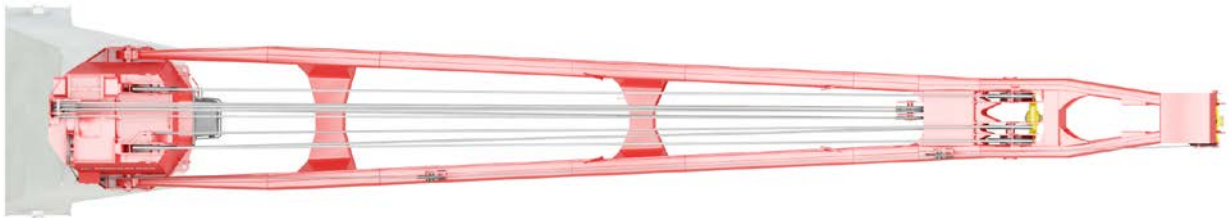
Basic system design

Enhanced cargo handling efficiency

- Improved operational performance
- Short response times
- Maximum speed based on actual load
- Exact position of the load is maintained even with open brake

Environmentally friendly

- No hydraulic oil (ordinary hydraulic crane approx 700 l.)
- Low noise level
- Low starting current
- 30-35% less power consumption
- 30-35% lower energy (oil) consumption
- Reduced Carbon Foot Print



Human Machine Interface (HMI)

MacGregor Crane Information System



- Real-time information on active systems
- Load/speed/outreach information
- Logs information for analysis
- Errors/warnings/events
- Touchscreen display

MacGregor shapes the offshore and marine industries by offering world-leading engineering solutions and services with a strong portfolio of MacGregor, Hatlapa, Porsgrunn, Pusnes and Triplex brands.

MacGregor is part of Cargotec (Nasdaq Helsinki: CGCBV).

Published by MacGregor. Copyright © MacGregor October 2017 All rights reserved. No part of this publication may be reproduced, stored, photocopied, recorded or transmitted without permission of the copyright owner.