

# GLE crane

Fast, clean and controlled lifts with VFD electric cranes

## Crane type

GLE electric variable frequency drive (VFD) cranes are self-contained units with all machinery enclosed in the crane housing. This protects them from weather, corrosion and damage. The standard GLE range covers lifting capacities from 25 to 100 tonnes, with outreaches of up to 41m.

The crane can also be delivered in a stepless load/outreach combination, which makes maximum use of the crane due to its mechanical design.

Each crane is tested electrically and mechanically before delivery.

## General design

GLE cranes are designed to meet the rules of all recognised classification societies.

The MacGregor control system ensures smooth, fast and stepless crane control, with hoisting, luffing and slewing motions independent of each other.

This means that at their maximum capacity, GLE cranes can operate at full speed using all three movements at the same time.



### HOISTING CAPACITY:

25-100t

### JIB RADIUS:

20-41m

### HOISTING SPEED:

19-50 m/min

Cranes can also be supplied with the tools needed for handling specific types of cargo.



## Important crane criteria

- Excellent positioning performance
- Long outreach, optimising weight and cost
- Robust design
- All machinery is weather protected inside crane housing
- Level-luffing

## Safety

- Diagnostic check at start-up procedure
- Overload protection with load cell as standard
- Crane performance will automatically adjust when operating in extremely high temperatures to avoid down time

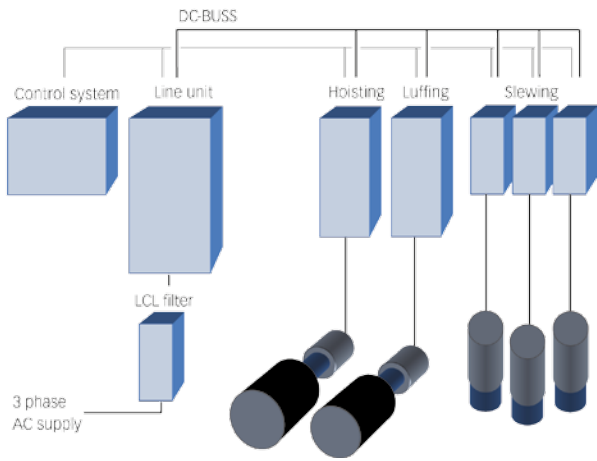
## Crane Control System

- In-house system development
- Individual adjustment possibilities
- Integrated diagnostic functions
- Optional features available



**MACGREGOR**

Designed to perform with the sea



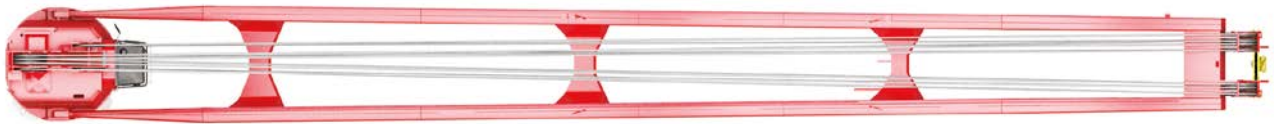
Basic system design

### Enhanced cargo handling efficiency

- Improved operational performance
- Short response times
- Maximum speed based on actual load
- Exact position of the load is maintained even with open brake

### Environmentally friendly

- No hydraulic oil (ordinary hydraulic crane approx 700 l.)
- Low noise level
- Low starting current
- 30-35% less power consumption
- 30-35% lower energy (oil) consumption
- Reduced Carbon Foot Print



# Human Machine Interface (HMI)

## MacGregor Crane Information System



- Real-time information on active systems
- Load/speed/outreach information
- Logs information for analysis
- Errors/warnings/events
- Touchscreen display

MacGregor shapes the offshore and marine industries by offering world-leading engineering solutions and services with a strong portfolio of MacGregor, Hatlapa, Porsgrunn, Pusnes and Triplex brands.

MacGregor is part of Cargotec (Nasdaq Helsinki: CGCBV).

Published by MacGregor. Copyright © MacGregor October 2017 All rights reserved. No part of this publication may be reproduced, stored, photocopied, recorded or transmitted without permission of the copyright owner.