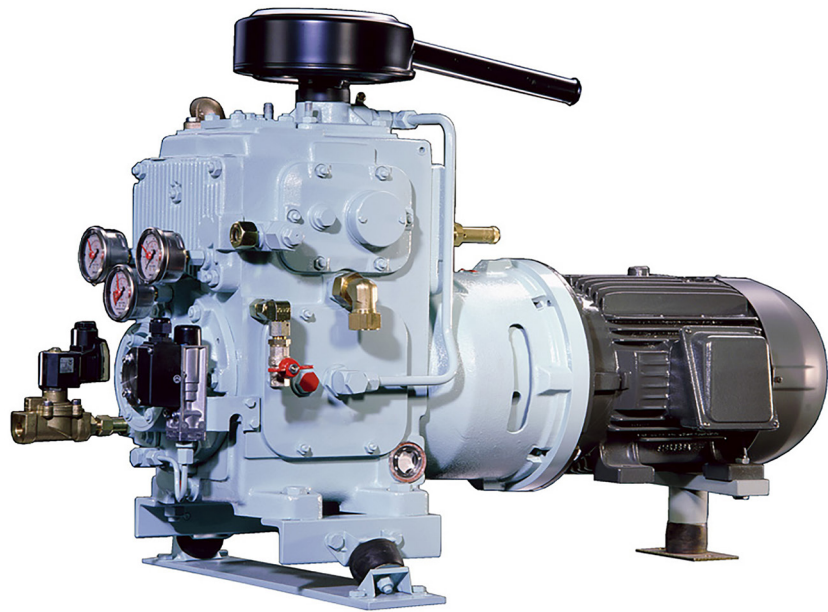


Compressor

HATLAPA Water-cooled piston compressor W30, W40



Structural features

- Two staged, vertical construction with two-throw crankshaft, trunk pistons, exchangeable, dry cylinder liners

Valves

- Combining suction and pressure valves for both stages

Water cooling

Intercooler and aftercooler:

- Built-in tubular coolers

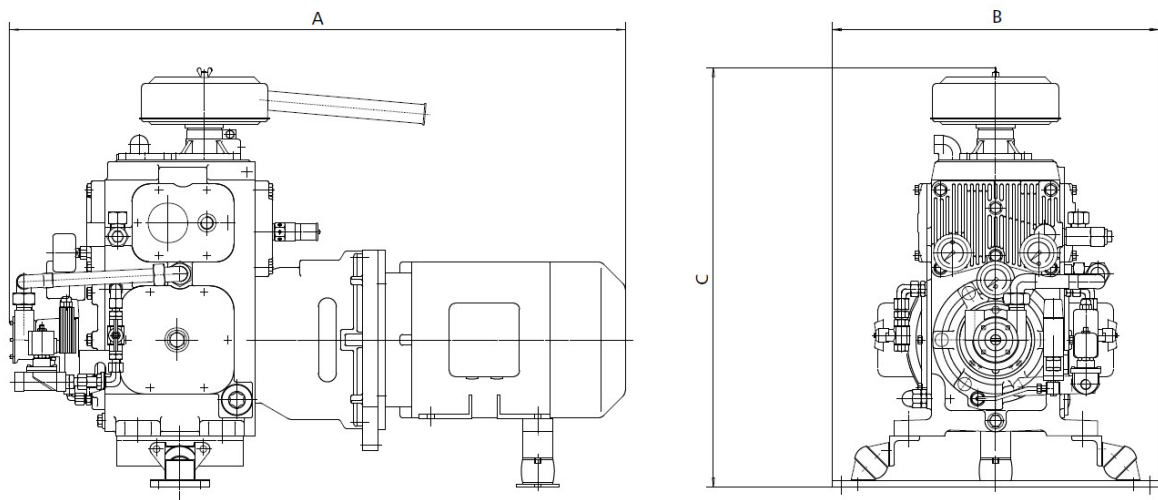
Force feed lubrication

- Gear pump directly driven by the crankshaft
- Oil pressure control by means of pressure gauge and pressure switch
- Oil level inspection glass

Bearings

- Crankshaft (pump): slide bearings
- Crankshaft (flywheel): roller bearings
- Connection rod: slide bearings
- Wrist pin 1st stage: slide bearings
- Wrist pin 2nd stage: needle roller bearings

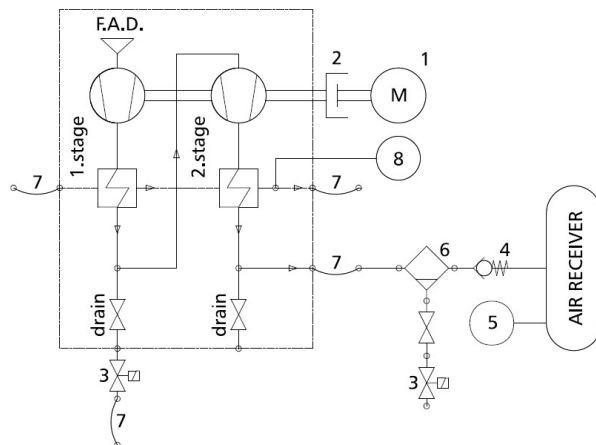
Technical data



Type	Cylinders	Stage	Speed r.p.m.	F.A.D m ³ /h	Power kW	Weight incl. e-motor approx. kg	Dimensions		
							A	B	C
W30	2	2	1150	23.2	4.8	230	980	545	700
			1450	28.7	6.1	230	980	545	700
			1750	33.5	7.5	230	980	545	700
W40	2	2	1150	31	6.3	260	1055	545	700
			1450	38.5	8.2	230	980	545	700
			1750	47	10	230	980	545	700

All data apply to a final pressure of 30 bar. The right for alteration of specification and data to incorporate improvements in design is reserved.

- Motor ①
- Flywheel and coupling ②
- Solenoid valve for draining ③
- Non-return valve ④
- Pressure switch ⑤
- Oil and water separator ⑥
- Flexible hoses ⑦
- Cooling water temperature control switch ⑧



MacGregor shapes the offshore and marine industries by offering world-leading engineering solutions and services with a strong portfolio of MacGregor, Hatlapa, Porsgrunn, Pusnes and Triplex brands.

MacGregor is part of Cargotec (Nasdaq Helsinki: CGCBV).

Published by MacGregor. Copyright © MacGregor October 2017. All rights reserved. No part of this publication may be reproduced, stored, photocopied, recorded or transmitted without permission of the copyright owner.

MacGregor Germany GmbH & Co. KG

hatlapa.info@macgregor.com

www.macgregor.com

