

Component Running Hours

Better control of equipment maintenance, utilising component running hours

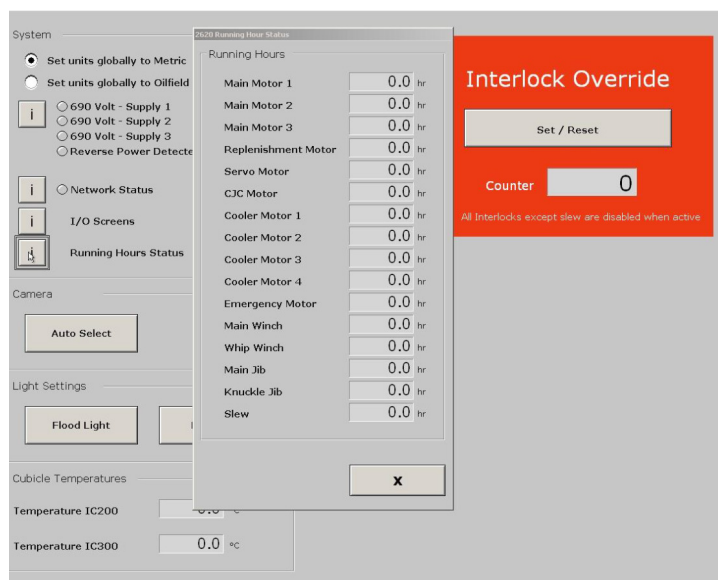
A preventive maintenance schedule is often based on a defined period of time, regardless of the component's actual running history. This could lead to high-usage components potentially not receiving the maintenance attention they require.

The crane control system can be upgraded with a graphical interface for component/function running hours.

The operator panel application software will be modified to display hour counters for all electric motors, the main winch, whip winch, slewing, knuckle jib and main jib movements and both tugger winches.

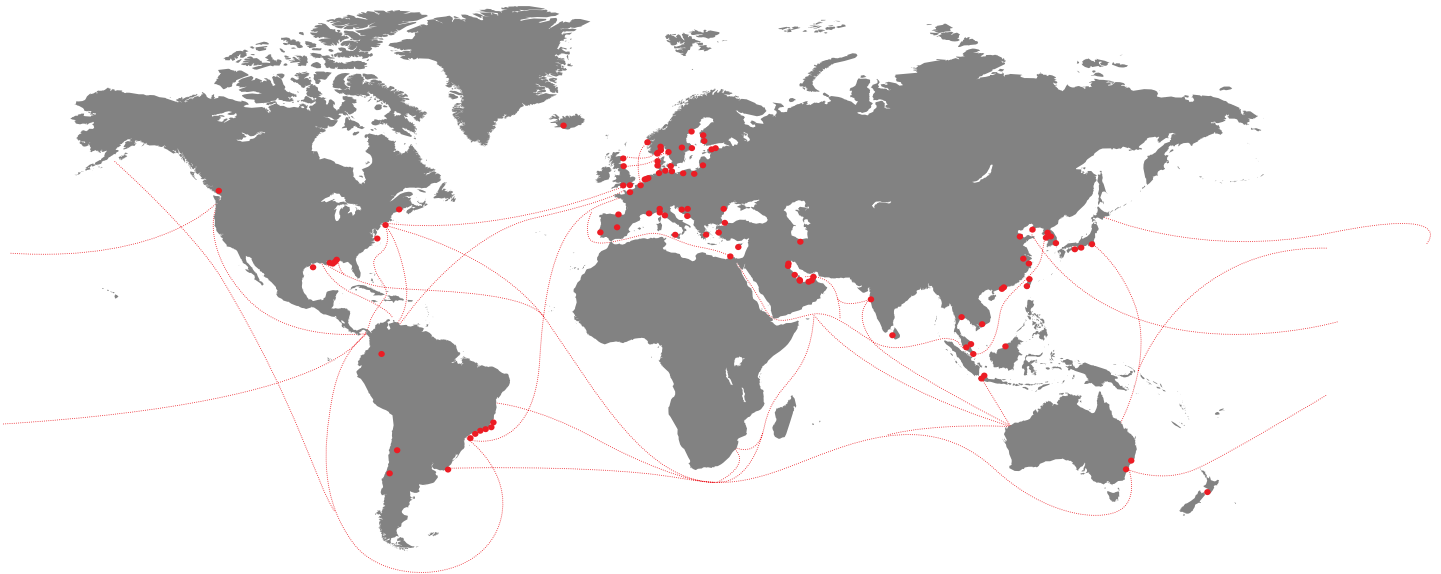
In addition, the total distance travelled of the main and knuckle jib cylinders is visible along with a segmented view of the cylinder rod showing the time that they are exposed to air.

These indicators are useful for estimating wear on the cylinder seals and corrosion on the cylinder rods.



Wherever needed, you can rely on our support.
We serve the following brands globally, and we also serve all others.

- Ankerlökken Marine
- Allset
- ASCA
- Becker
- BMH
- Conver-OSR
- Grampian Hydraulics
- Flintstone
- Greer Marine
- Hamworthy
- Hatlapa
- Hydramarine
- Hägglunds
- Interschalt
- KGW
- KYB - ASCA
- KYB - Kayaba Industries / Navire Cargo Gear
- Luezhoe
- MacGregor
- MacGregor-Conver
- MacGregor-Hägglunds
- MacGregor-Kayaba
- MacGregor-Navire
- Navire Cargo Gear
- Nordströms
- Ozean Service & Reparatur
- Platform Crane Services (PCS)
- Plimsoll
- Pusnes
- Porsgrunn
- Triplex
- Vestnorsk Hydraulikkservice (VNH)



MacGregor shapes the offshore and marine industries by offering world-leading engineering solutions and services with a strong portfolio of MacGregor, Hatlapa, Porsgrunn, Pusnes and Triplex brands. Shipbuilders, owners and operators are able to optimise the lifetime profitability, safety, reliability and environmental sustainability of their operations by working in close cooperation with MacGregor.

MacGregor solutions and services for handling marine cargoes, vessel operations, offshore loads, crude/LNG transfer and offshore mooring are all *designed to perform with the sea*.

MacGregor is part of Cargotec (Nasdaq Helsinki: CGCBV).

Published by MacGregor. Copyright © MacGregor October 2017. All rights reserved. No part of this publication may be reproduced, stored, photocopied, recorded or transmitted without permission of the copyright owner.

At your service

MacGregor Norway AS
krs.service@macgregor.com
www.macgregor.com

