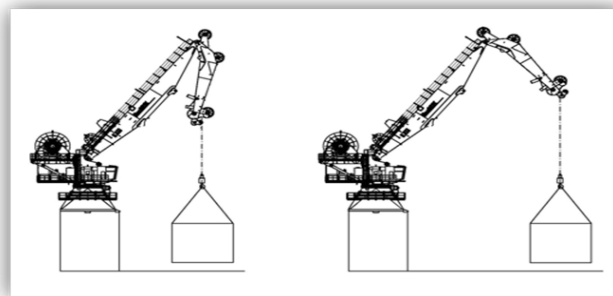
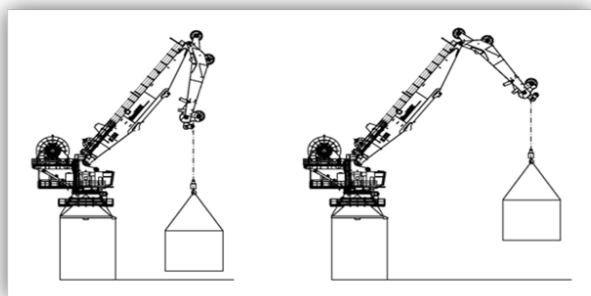


Float the Load

Automatic compensation system that keeps the load floating horizontally



When a load is to be moved on deck offshore, or while installing equipment on the deck, it is often important for the load to be at a fixed distance from the surface. In many cases it is favourable to keep the load as close to the deck as possible.

When the booms are moved, the distance between the deck and the load will change, causing a challenging situation for the crane operator.

This means difficulties if the bottom of the load is not seen by the operator, due to an obstruction in the line of sight.

Float the Load is a function that automatically moves the winch, in order to keep a constant height of the load above the surface of the deck or ground, regardless of the boom movement.

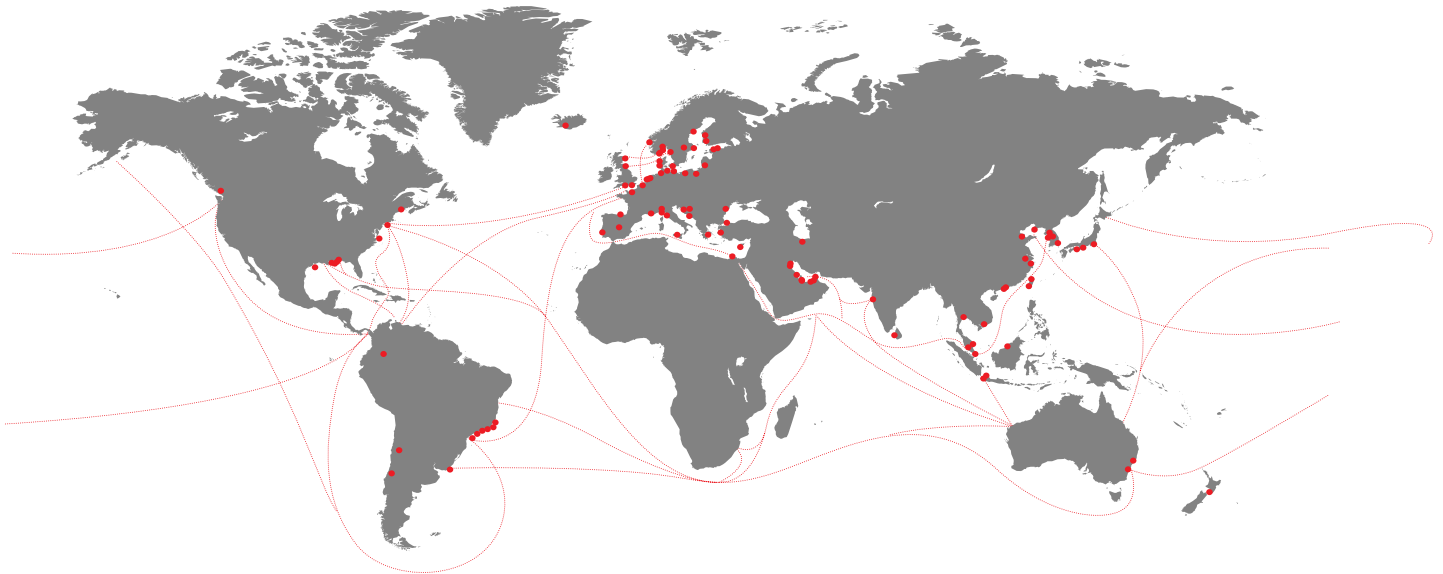
Once Float the Load is activated, the load can be moved around the deck without any manual compensation from the operator and the same distance will be achieved.

This will increase operational efficiency as the operator is given less simultaneous operations to complete at a given time.



Wherever needed, you can rely on our support.
We serve the following brands globally, and we also serve all others.

- Ankerlökken Marine
- Allset
- ASCA
- Becker
- BMH
- Conver-OSR
- Grampian Hydraulics
- Flintstone
- Greer Marine
- Hamworthy
- Hatlapa
- Hydramarine
- Hägglunds
- Interschalt
- KGW
- KYB - ASCA
- KYB - Kayaba Industries / Navire Cargo Gear
- Luezhoe
- MacGregor
- MacGregor-Conver
- MacGregor-Hägglunds
- MacGregor-Kayaba
- MacGregor-Navire
- Navire Cargo Gear
- Nordströms
- Ozean Service & Reparatur
- Platform Crane Services (PCS)
- Plimsoll
- Pusnes
- Porsgrunn
- Triplex
- Vestnorsk Hydraulikkservice (VNH)



MacGregor shapes the offshore and marine industries by offering world-leading engineering solutions and services with a strong portfolio of MacGregor, Hatlapa, Porsgrunn, Pusnes and Triplex brands. Shipbuilders, owners and operators are able to optimise the lifetime profitability, safety, reliability and environmental sustainability of their operations by working in close cooperation with MacGregor.

MacGregor solutions and services for handling marine cargoes, vessel operations, offshore loads, crude/LNG transfer and offshore mooring are all *designed to perform with the sea*.

MacGregor is part of Cargotec (Nasdaq Helsinki: CGCBV).

Published by MacGregor. Copyright © MacGregor October 2017. All rights reserved. No part of this publication may be reproduced, stored, photocopied, recorded or transmitted without permission of the copyright owner.

At your service

MacGregor Norway AS
krs.service@macgregor.com
www.macgregor.com

