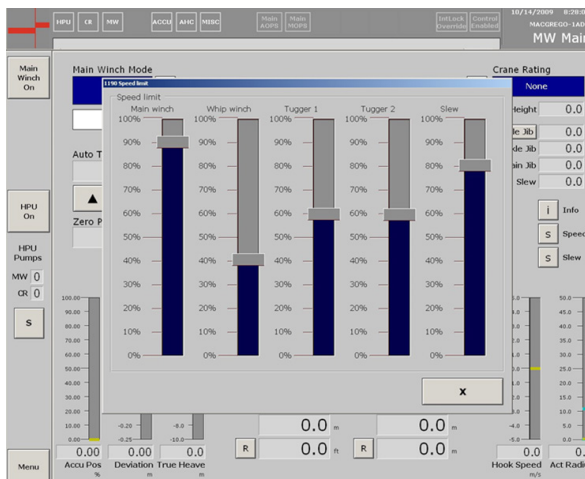


Function Speed Limit Sliders

Enabling the operator to adjust each function's speed independently for precision control

During crane operations there are certain situations where small and accurate crane movements are required. For the operator, it can be difficult to execute small precision movements to the required accuracy.

For operations at a greater depth, it is often required to lower/hoist the load at a certain speed. The crane operator must balance the joystick at a given command position, to attain the desired output for long periods of time. This can be a tiring task which can result in errors and variations to the lowering/hoisting speed.



In order to achieve better control of a crane function, a speed limit controller can be implemented to the operating system.

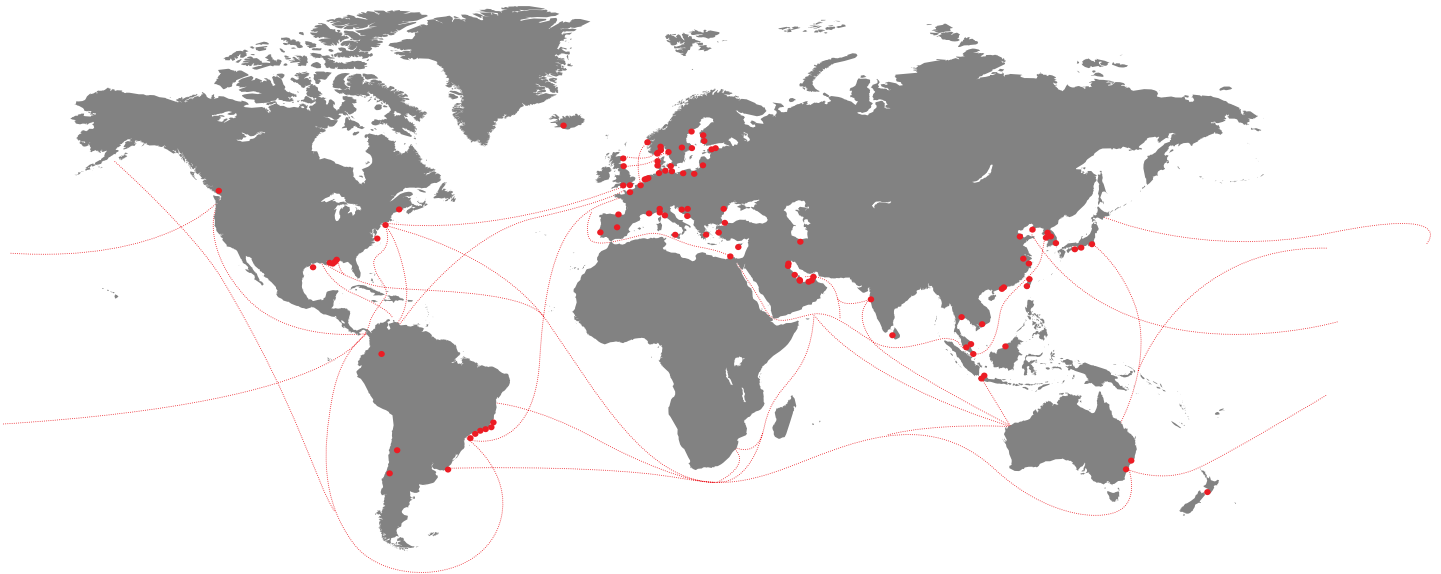
The operator then has the option to adjust the function's speed by means of a slider on the operator panel. This function is useful when it comes to fine driving, e.g. over deck or when lowering/hoisting a load at a given speed.

If a specified winch speed is required, the winch slider is set to a low setting and the joystick is moved to full activation. The slider can then be adjusted until the correct speed is achieved.

See also our Auto-Pilot function.

Wherever needed, you can rely on our support.
We serve the following brands globally, and we also serve all others.

- Ankerlökken Marine
- Allset
- ASCA
- Becker
- BMH
- Conver-OSR
- Grampian Hydraulics
- Flintstone
- Greer Marine
- Hamworthy
- Hatlapa
- Hydramarine
- Hägglunds
- Interschalt
- KGW
- KYB - ASCA
- KYB - Kayaba Industries / Navire Cargo Gear
- Luezhoe
- MacGregor
- MacGregor-Conver
- MacGregor-Hägglunds
- MacGregor-Kayaba
- MacGregor-Navire
- Navire Cargo Gear
- Nordströms
- Ozean Service & Reparatur
- Platform Crane Services (PCS)
- Plimsoll
- Pusnes
- Porsgrunn
- Triplex
- Vestnorsk Hydraulikkservice (VNH)



MacGregor shapes the offshore and marine industries by offering world-leading engineering solutions and services with a strong portfolio of MacGregor, Hatlapa, Porsgrunn, Pusnes and Triplex brands. Shipbuilders, owners and operators are able to optimise the lifetime profitability, safety, reliability and environmental sustainability of their operations by working in close cooperation with MacGregor.

MacGregor solutions and services for handling marine cargoes, vessel operations, offshore loads, crude/LNG transfer and offshore mooring are all *designed to perform with the sea*.

MacGregor is part of Cargotec (Nasdaq Helsinki: CGCBV).

Published by MacGregor. Copyright © MacGregor October 2017. All rights reserved. No part of this publication may be reproduced, stored, photocopied, recorded or transmitted without permission of the copyright owner.

At your service

MacGregor Norway AS
krs.service@macgregor.com
www.macgregor.com

