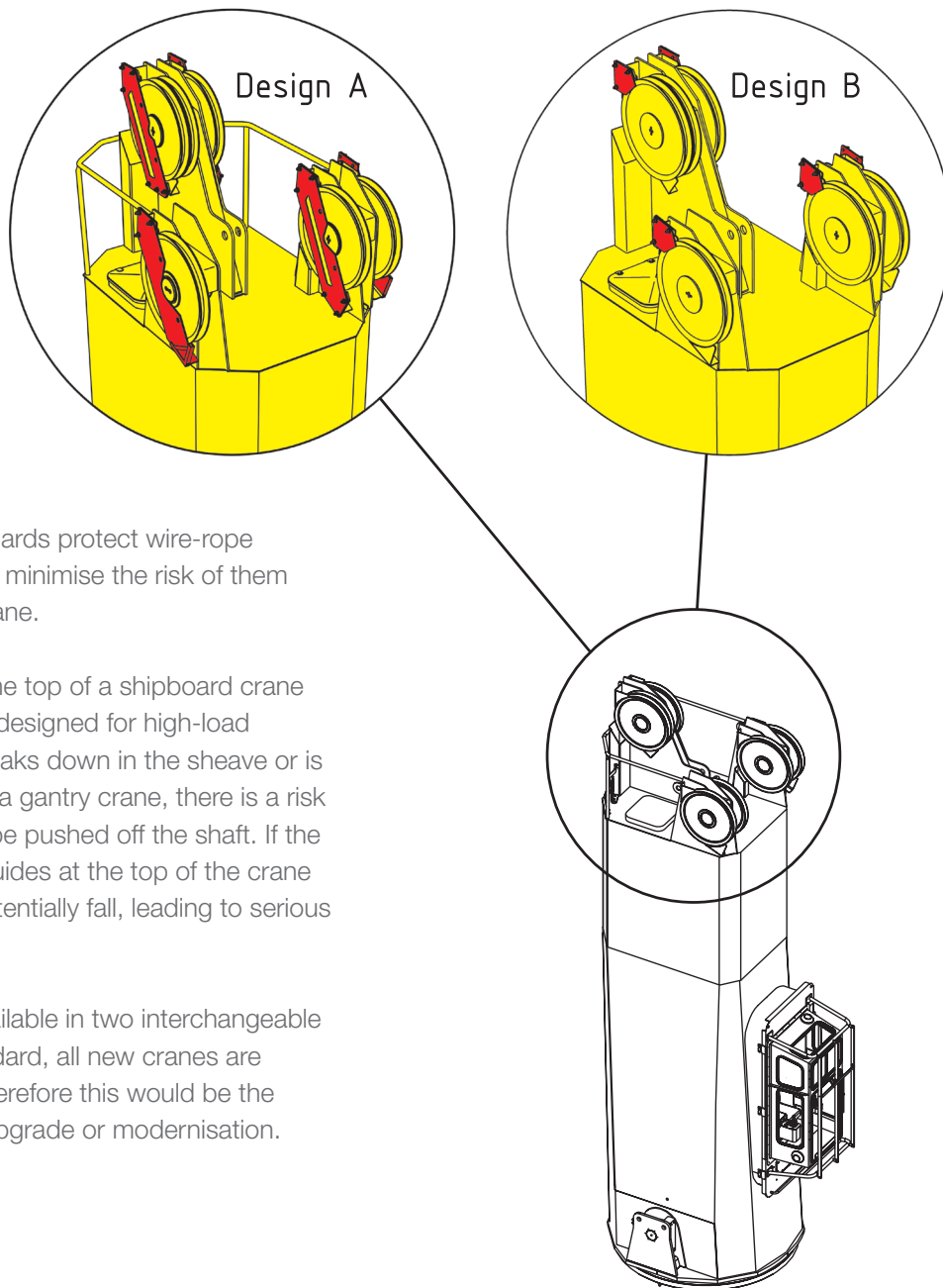


Wire sheave guards

Protect wire rope and prevent accidents from happening

Technical information CM-126



MacGregor wire sheave guards protect wire-rope sheaves from damage and minimise the risk of them breaking away from the crane.

Wire sheaves, located at the top of a shipboard crane housing, contain bearings designed for high-load operations. If a bearing breaks down in the sheave or is damaged by, for example, a gantry crane, there is a risk that the entire sheave will be pushed off the shaft. If the wire sheaves or the wire guides at the top of the crane are damaged, they can potentially fall, leading to serious injury and/or loss of life.

The sheave guards are available in two interchangeable designs; A and B. As standard, all new cranes are delivered with design A, therefore this would be the recommendation for any upgrade or modernisation.

Benefits

- Increases safety
- Prevents accidents
- Reduces damage
- Easy to install
- Reduces risk/cost for shipowner
- Improves wire derailment protection

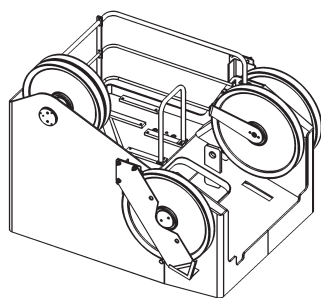
At your service



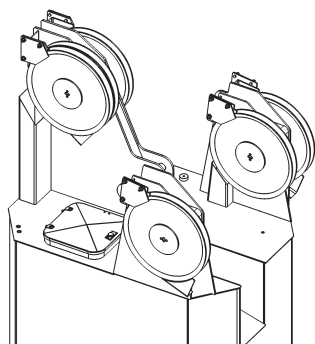
MACGREGOR

Designed to perform with the sea

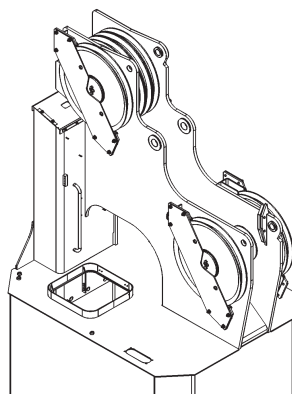
Crane top, Type 1



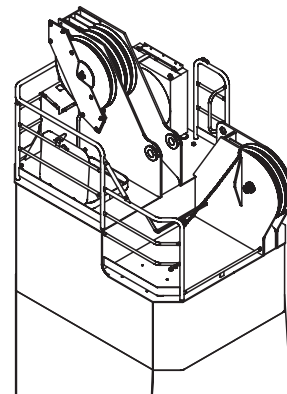
Crane top, Type 2



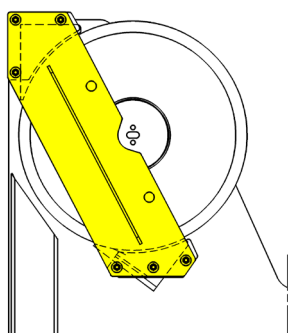
Crane top, Type 3



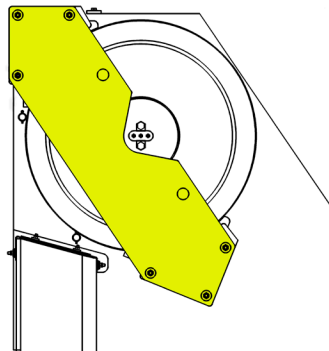
Crane top, Type 4



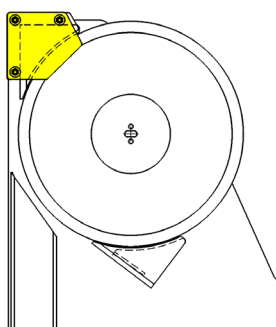
Design A



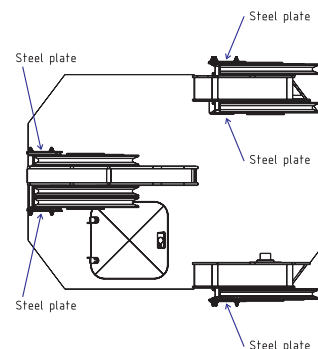
Design A, for GLB cranes



Design B



Principle design



Ordering information

Crane top 1, Design A:	189 7538-801	Weight: 90kg
Crane top 1, Design B:	189 7537-801	Weight: 30kg
Crane top 2, Design A:	189 4689-801	Weight: 200kg
Crane top 2, Design B:	189 5956-801	Weight: 50kg
Crane top 3, Design A:	189 7425-801	Weight: 130kg
Crane top 3, Design B:	189 7424-801	Weight: 35kg
Crane top 4, Design A:	390 7581-801	Weight: 27kg

The part numbers above are standard sheave protection kits that contain components to modify the top of one crane housing. For some crane types, there may be components left over after installation.

Installation requirements

- Personnel required: engineer
- Installation time: approximately 4 to 6 hours/crane
- Tools required: standard hand tools and welding equipment for brackets

MacGregor solutions and services for handling marine cargoes, vessel operations, offshore loads, crude/LNG transfer and offshore mooring are all *designed to perform with the sea.*

MacGregor is part of Cargotec (Nasdaq Helsinki: CGCBV).

Published by MacGregor. Copyright © MacGregor January 2018. All rights reserved. No part of this publication may be reproduced, stored, photocopied, recorded or transmitted without permission of the copyright owner.