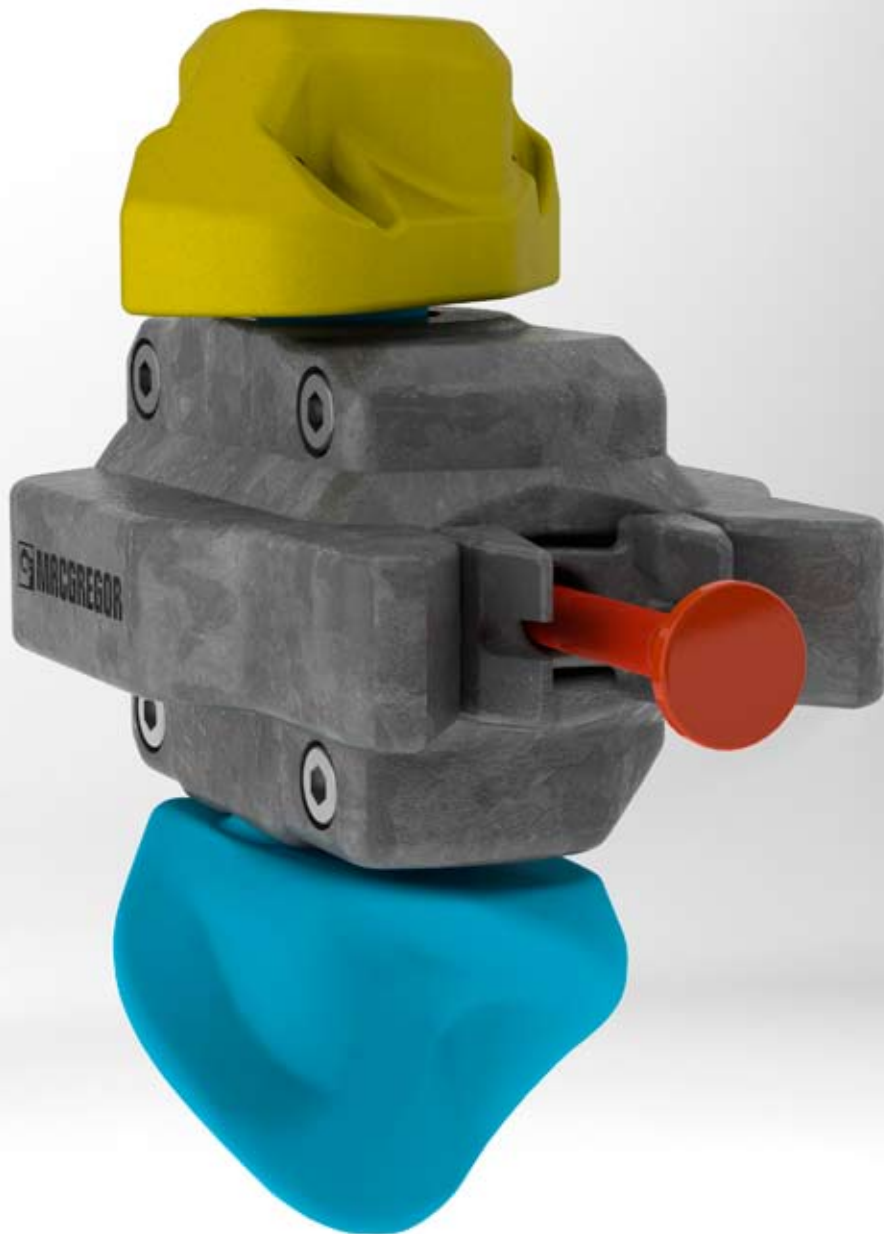


# C8A-DF Fully automatic twistlock with dual function



# C8A-DF

The new C8A-DF provides improved efficiency with one design of twistlock suitable for every container locking purpose. There is no need for any unlocking operation above the lashing bar container level – just load and unload without manual operation! The same C8A-DF can be used for on deck stacked containers – both above the lashed containers and in areas below the lashing bars.

## Improved efficiency and productivity

C8A-DF has several features which help to cut down port turnaround times and to increase vessel's productivity:

- As there is no need to unlock the C8A-DF twistlock in areas above the lashings, the unloading can start very soon after a vessel arrives in port.
- The C8A-DF only needs to be opened in way of the lashing bars and below. As C8A-DF is suitable for every container locking function, there is no need to sort out and store different kinds of twistlocks in separate storage bins.
- C8A-DF is a proven solution for tandem lifts.
- The crane operators can feel the twist cone rotation "at their fingertips", thanks to the C8A-DF's screw shape. This adds to smooth operation.

## Symmetrical locking

The C8A-DF load carrying areas provide symmetric locking between twistlock and container and distribute high stresses evenly. The high safety factor means there is also an improved margin for preventing loss and damage to containers.

## Positive Locking function

In way of the lashing bars and in areas below this level the Positive Locking function needs to be engaged by pulling the lock's handle. The locking status is clearly indicated by the handle position. The Positive Locking function works actively as a part of the lashing system resulting in lower stresses for lashing eyes, lashing bars and turnbuckles. It also reduces the side to side movements of the container stacks on deck.



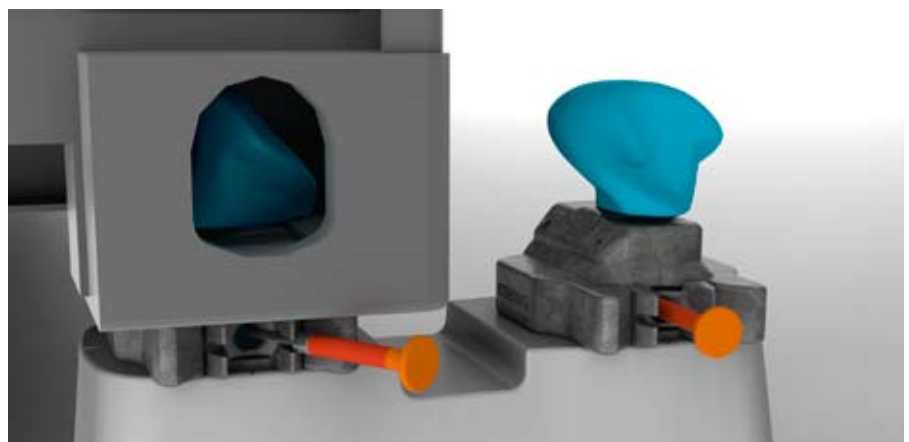
**Type:** Symmetrical locking

**Weight:** 7.4 kg

**Material:** Fully forged in high tensile steel, springs and wire handle in acid proof stainless steel with protective plastic hose and knob

**Treatment:** Hot dip galvanized

**Nom breaking load:** Tension 500 kN / Pullout load in auto mode 460 kN, Shear 420 kN



*Cargotec improves the efficiency of cargo flows on land and at sea – wherever cargo is on the move. Cargotec's daughter brands, Hiab, Kalmar and MacGregor are recognised leaders in cargo and load handling solutions around the world.*

*Customer-driven MacGregor engineering and service solutions for the maritime transportation, offshore load-handling and naval logistics markets are used onboard merchant and naval ships, on offshore support vessels, and in ports and terminals.*

*Published by Cargotec Corporation. Copyright © Cargotec August 2010. All rights reserved. No part of this publication may be reproduced, stored, photocopied, recorded or transmitted without permission of the copyright owner.*



**Cargotec Finland Oy**

Hallimestarinkatu 6

FI-20780 Kaarina, Finland

Tel: +358 2 412 11

Fax +358 2 4121 256

[www.macgregor-group.com](http://www.macgregor-group.com)

[www.cargotec.com](http://www.cargotec.com)



Lloyd's Register Quality Assurance certifies that the Quality Management System for Cargotec Corporation's business area MacGregor is ISO 9001 compliant