

Compressor

MacGregor Air-cooled piston compressor L9, L14

Structural features

- Two staged cylinders in 90° V-arrangement, with one-throw crankshaft, single acting trunk pistons 1st stage: 1 cylinder 2nd stage: 1 cylinder

Valves

- Combined suction and pressure valves for both stages

Air cooling

- By radial fan directly driven by the crankshaft

Intercooler and aftercooler

- Finned pipes

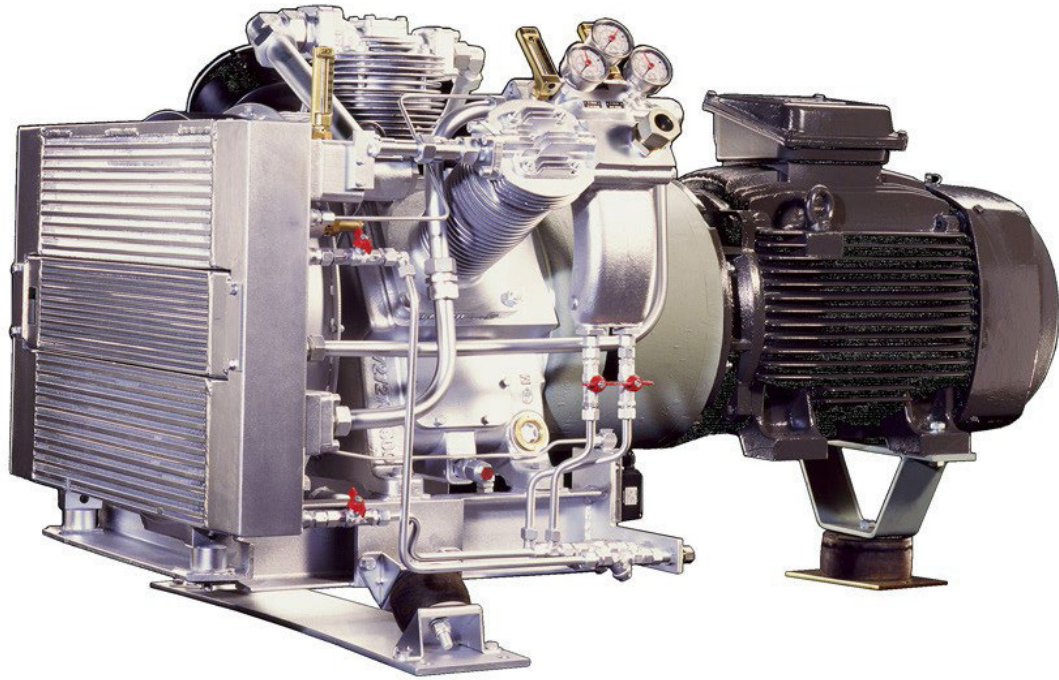
Splash lubrication

- Oil level inspection glass
 - Crankcase venting from oil filler to air suction filter

Bearings

- Crankshaft: cylinder roller bearings
- Connecting rod: needle roller bearings
- Wrist pin: needle roller bearings

HATLAPA Air-cooled piston compressor L140, L160, L190



Structural features

- Three staged cylinders in 2 x 60° W-arrangement, with one-throw crankshaft, single acting trunk pistons
1st stage: 1 cylinder
2nd stage: 1 cylinder

Valves

- Combined suction and pressure valves for all stages

Air cooling

- By axial fan directly driven by the crankshaft

Intercooler and aftercooler

- Block type

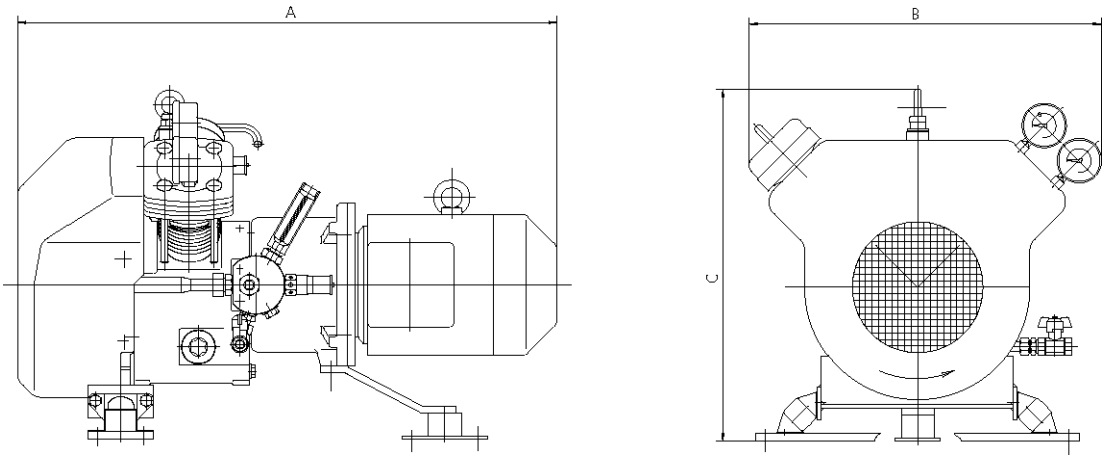
Force feed lubrication

- Gear pump driven by the crankshaft by means of gear wheels
- Oil pressure control by means of pressure gauge and pressure switch
- Oil level inspection glass
- Crankcase venting from oil filler to air suction filter
- Oil filtration by external, exchangeable oil filter insert

Bearings

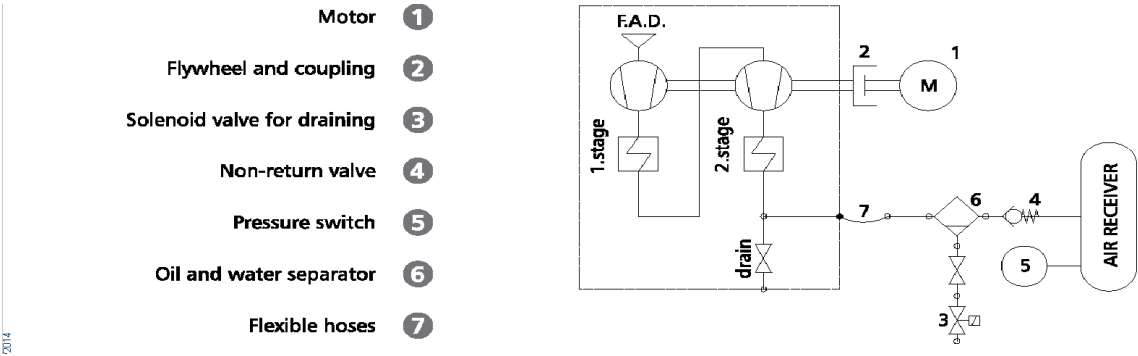
- Crankshaft: slide bearings
- Connecting rod: slide bearings
- Wrist pin : needle bearings

Technical data

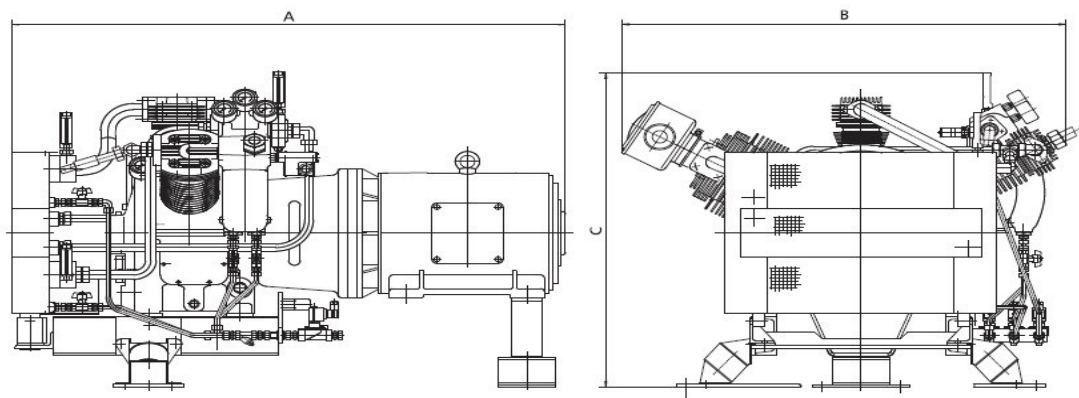


Type	Cylinders	Stage	Speed r.p.m.	F.A.D m³/h	Power kW	Weight incl. e-motor approx. kg	Dimensions		
							A	B	C
L9	2	2	1150	6.6	1.7	120	820	540	540
			1450	8.7	2.3	120	820	540	540
			1750	10.5	2.8	120	820	540	540
L14	2	2	1150	10.5	2.7	140	840	540	540
			1450	14	3.5	140	840	540	540
			1750	17	4.2	140	840	540	540

All data apply to a final pressure of 30 bar. The right for alteration of specification and data to incorporate improvements in design is reserved.



Technical data



Type	Cylinders	Stage	Speed r.p.m.	F.A.D m³/h	Power kW	Weight incl. e-motor approx. kg	Dimensions		
							A	B	C
L140	3	3	1150	100	19.5	700	1540	1150	950
			1450	127	26.8	700	1540	1150	950
			1750	154	33.5	700	1540	1150	950
L160	3	3	1150	118	23	750	1675	1150	1050
			1450	151	30	750	1675	1150	1050
			1750	185	40	850	1675	1150	1050
L190	3	3	1150	135	25	750	1675	1150	1050
			1450	175	34.5	850	1675	1150	1050
			1750	215	46.5	900	1675	1150	1050

All data apply to a final pressure of 30 bar. The right for alteration of specification and data to incorporate improvements in design is reserved.

