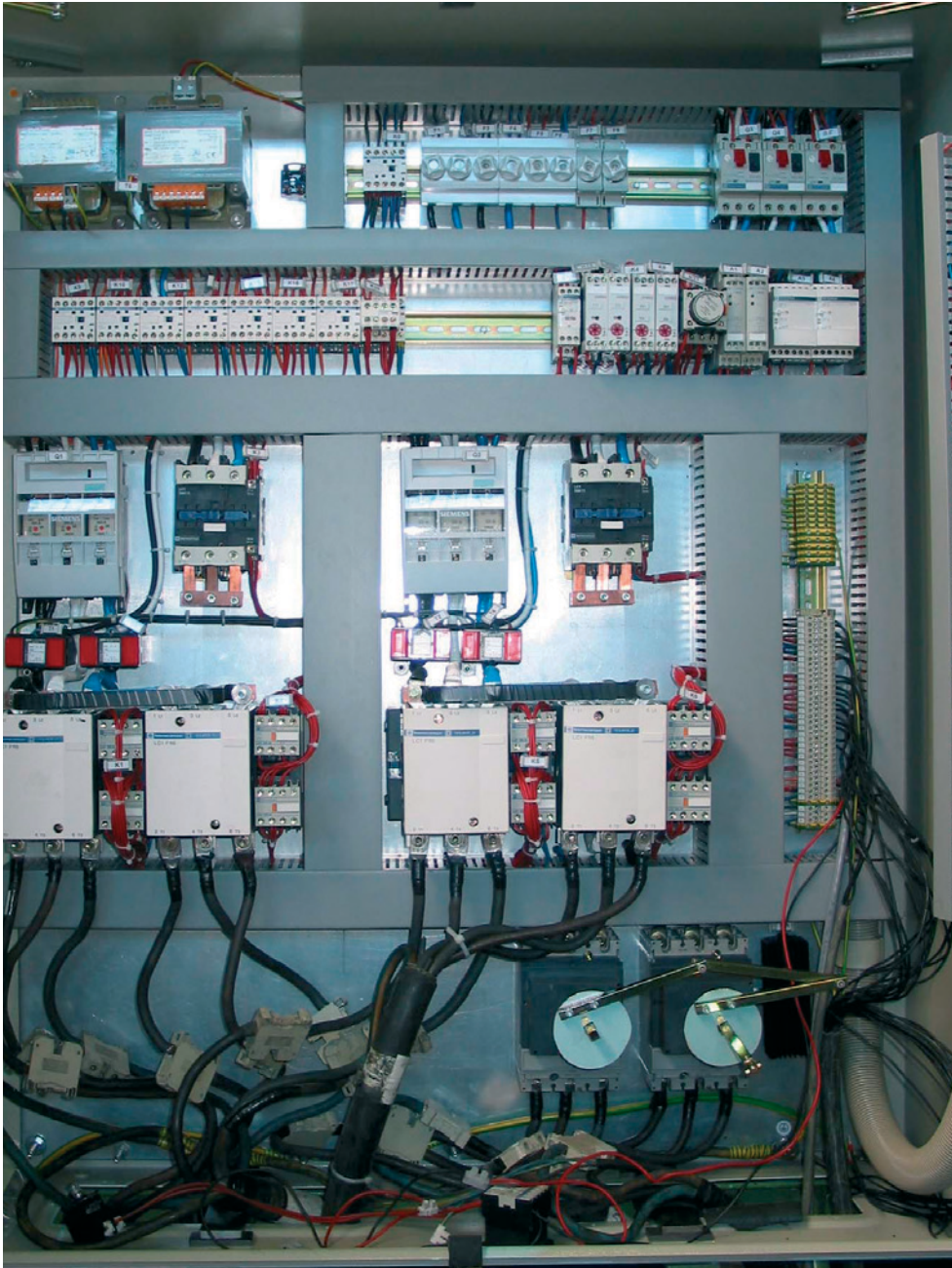


E – Electric Winch

Anchor and mooring winch

This electrically driven winch is used mainly on dry cargo vessels such as container carriers, RoRo and RoPax carriers, ferries and cruise vessels.

TTS



The electric anchor and mooring winch is supplied with the necessary class certification for all main drive components as well as for the switchboard below deck, which contains CPU automation. Final confirmation of the classification will be established during sea trial, before the vessel is delivered to its owner.

System advantages

- Compact design ensuring minimum space required on deck
- Three-step or stepless frequency-converted speed control
- Automatic load detection by electric load-measuring bolt for mooring operation during port stay
- Safety automation for anchor operation, protecting against misoperation
- An electric power cable is the only interface needed for installation and operation of the winch
- Self-aligned foundation option ensures easy installation of the winch on deck, reduces installation time and provides the best access for maintenance of the deck area below the winch.